

New headsets: Meet the Engage 55 SE, Engage 65 SE, and Engage 75 SE (Second Edition)

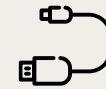
Male USB-C port on the docking station, to connect and charge the headset



USB-C port on the headphones

USB-C port on the base of the docking station provides connectivity to a computer

The rationale for a Second Edition



Aligning global production with EU USB-C charging standards. At the end of 2024, the European Union (EU) will mandate that all battery powered electronic devices will need a USB-C port for charging*. To reduce e-waste and aid business sustainability for our customers, we are making this change globally.

***Does not impact cables or dongle connectivity.**

It is still possible to use 'USB-C to USB-A' cables to charge headsets or connect to the computer. The Engage 55 SE dongle will also have a USB-A variant.

What's the same, what's new?



Engage 55, 65, 75



Engage 55 SE, 65 SE, 75 SE

The same

Product quality
Product performance (listen, talk, range, density)
User interface (all the controls and buttons are the same)
TA Country Approval list
MS Teams certification (Engage 55 only)

New

Product quality
Product performance (listen, talk, range, density)
User interface (all the controls and buttons are the same)
TA Country Approval list
MS Teams certification (Engage 55 SE only)
New product names (Engage 55 SE, Engage 65 SE, Engage 75 SE)
New SKUs
Product name on box label and in Jabra Direct
Packaging
Metal on the earcup and boom arm is now titanium black
Improved pairing experience for the Link 400 (the Dongle for the Engage 55 SE)
USB-C charging port on the headsets
USB-C 'male' charging port on the docking station (Engage 65 SE, 75 SE)
USB-C port(s) on the docking station, providing a connection to a computer

Additional key information

Variants available:

Please refer to table on slide 3

Engage 55, 65, 75 SKUs:

Will be discontinued

Micro-USB to USB-C

For the Engage 65 SE and 75 SE base units and Engage desk charging stands, any USB port that was Micro-USB will become USB-C

This means second edition headsets cannot be physically attached to first edition base units or desk charging stands

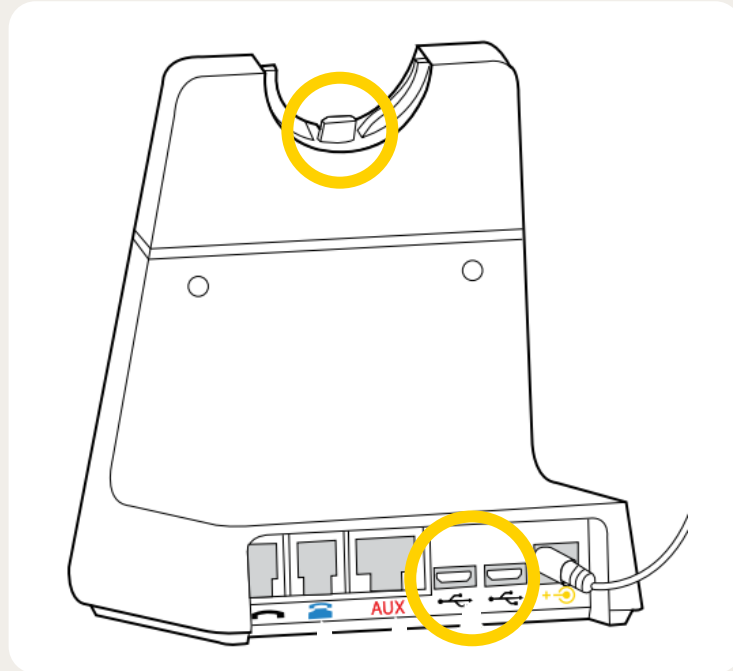


Diagram shows micro-USB ports on the Engage 75 base. These will change to USB-C

USB-C port(s) on the base of the docking station will provide connectivity to a computer



All Engage wireless SE headsets will have a USB-C port

WHAT'S NEW?

USB-C charging ports on the headsets and base units across global production

Engage 55 SE	Connects to:	Connectivity	Variants	Bundles
Stereo	1 USB device via Link 400 (incl.)	USB-A or USB-C Link 400	Microsoft Teams (MS) or UC	With or without desk charging stand
Mono				Desk stand included
Convertible				

Engage 65 SE	Connects to:	Connectivity	Variants	Bundles
Stereo	1 USB device and 1 analog deskphone	RJ Cable USB-C to USB-A cable	- no variants -	- no bundles -
Mono				
Convertible				- no bundles -

Engage 75 SE	Connects to:	Connectivity	Variants	Bundles
Stereo	2 USB devices (softphone and/or desk phone); 2 Bluetooth® devices and 1 analog deskphone	RJ Cable USB-C to USB-A cable Bluetooth	- no variants -	- no bundles -
Mono				
Convertible				- no bundles -